

easecentral

Partnership Features Guide



PROFESSIONAL GROUP PLANS
Specializing in Employee Benefits

One Solution for Benefits & HR

Taking the headaches out of administration
so you can focus on benefits.

Contact your PGP Representative to Get Started.

Long Island: 631.951.9200 • New York City: 212.840.4949 • New Jersey: 908.276.9399

EaseCentral

is an online benefits enrollment platform built for insurance brokers and employers. EaseCentral makes it simple to set up and manage benefits, onboard new hires, stay compliant and offer employees one destination for all their human resources information.



Simplify Enrollment

Save time during open enrollment and ongoing management by eliminating paper forms, reducing errors, and creating digital employee files for you and your groups.



Increase Engagement

Deepen your relationships with your groups by easily adding new lines of coverage, integrating benefits with their payroll provider and other HR services, and regularly promoting your solution.



Gain Visibility

Stay on top of enrollment status, access group information 24/7 and support your groups year round with dashboards and reports.

WHAT EASECENTRAL CLIENTS SAY



The site is simple to learn and operate, and our account teams can quickly build robust portals that simplify the administration of client benefits programs. EaseCentral is a great system and should be a key partner for anyone administering employee benefits programs.



Dan Garfin, CHFC, CLU

NFP, Director of Services, Key & Select Account



We have companies on their platform that range from 2 – 350 employees and are now helping the majority of our clients in this space remove paperwork from benefits administration. Employees like it and HR loves it. The bottom line is EaseCentral has helped bring about a wonderful and long overdue change to health insurance.



Ian Rice, Broker

Filice



EaseCentral is just that... easy to use and a great way to centralize all the key employee data that I need to support my small group client's with benefits administration. And anytime I get stuck, the service team is super.



Robin Van Vliet

Van Vliet Wellness Insurance Solution



“When I started my own agency, I had my book of business come with me. In the first year, my book more than doubled, and there's no way that would have happened without EaseCentral.”

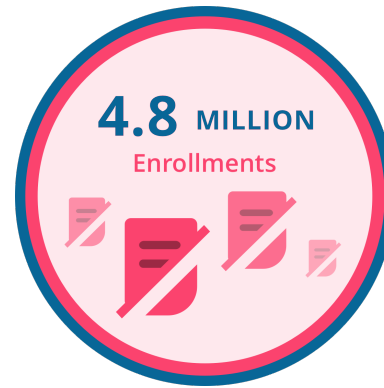


Nathan Craig, Broker

Culture Insurance Services

Why Professional Group Plans and EaseCentral?

Easily manage employee benefits, onboarding, and compliance in one central location.



Free training



For small and large groups



Easy to use

EaseCentral can accommodate groups of any size or complexity.

To make the transition to online enrollment easier, Professional Group Plans will be here to help assist you with your setup process.

CORE PRODUCT SUMMARY

1. EaseCentral's robust forms library includes over 3,000 applications so employees can complete enrollment online.
2. EaseCentral is rules-based, meaning no enrollment fields are left incomplete.
3. Employees can compare plans side-by-side, read and watch informational content, and immediately see their costs per pay period.
4. Dashboards and reports allow brokers and admins to stay up to date on enrollment progress and results.
5. Digital employee files are created when PGP sets up your groups. This file can sync with Payroll, HRIS, and other services, reducing multiple entry and keeping everything up to date.
6. New hires can sign an offer letter, submit W-4, I-9 and other information, review digital policy documents, and enroll in benefits in one session.
7. Free training and access to 24/7 support team.



EASECENTRAL SUBSCRIPTION FEATURE LIST

Online Enrollment

- Rate quoting
- Replace paper with over 3,000 Carrier-mapped forms provided
- Census files can be generated in EaseCentral for carriers
- Rules based system and employer and carrier rules are automatically enforced
- Support for Spanish Enrollment
- Create your own plan libraries
- Ability to access GA plan libraries
- EaseCentral completes .pdf carrier applications with employee demographic, dependents, and enrollment data for easy distribution to carriers.
- Directly submit to GAs
- Comprehensive support center for you and your groups

Engagement

- Integrates with Payroll provider
- Integrates with Time off tracking, performance reviews and other EaseCentral HRIS solutions
- Co-branded Marketing brochures and videos for you to communicate with your groups
- Carrier integrations to make it easy to add additional lines of coverage
- Embed carrier videos in enrollment experience
- Access to a marketplace of services you can control and offer your groups

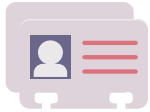
Dashboards and Reporting

- Open enrollment and maintenance throughout the year (ATC)
- Enrollment progress reports
- Build custom reports

Onboarding

- Custom welcome message
- Create a digital employee file
- Add emergency contact information
- Complete W-4, I-9 and Direct Deposit online
- Information stored securely in the cloud
- Upload and have employees review onboarding docs.
- E-sign to verify you've read company onboarding docs
- Syncs with benefits
- Create and extend offer letters to applicants

ADD-ONS/INTEGRATIONS FEATURE LIST



ACA

- Deliver required notifications:
 - Model exchange notice
 - Initial COBRA notice
 - Custom documents
- Identify, measure and track variable hour employees
- Ensure coverage meets minimum affordability guidelines
- Generate signature-ready IRS 1094C and 1095C forms
- Track plans that meet Minimum Value standards
- Use the ALE Calculator to determine if an employer has to participate in ACA reporting
- Help employers avoid unnecessary penalties and fees



HRIS

- Time-off tracking
- Performance reviews
- Org Chart
- Company Directory
- HR Stats
- Employee Surveys
- Milestones and Events



Payroll Integration

- Quickly set up new employees with a payroll provider by sending info from EaseCentral
- Deduction changes are automatically sent to payroll provider
- With some payroll integrations, employees can view paystubs in EaseCentral

EaseCentral Broker Pricing

EaseCentral Subscription	Pro (1000 employees) \$349 / Month	Agency (5000 employees) \$649 / Month	Enterprise (unlimited employees) \$1,199 / Month
HRIS	\$3 pepm		
Payroll Provider Integration	starting at \$1 pepm		
ACA	\$6 per report per year		

*unlimited groups for all packages

Contact your PGP Representative to Get Started.

Long Island: 631.951.9200 • New York City: 212.840.4949 • New Jersey: 908.276.9399